



OLIVARA  
RESIDENCES & PARK

Bringing Vibrant Urban Living within a Beautiful Setting



OLIVARA  
RESIDENCES & PARK

PALMA'S new URBAN residences. Bringing VIBRANT living  
within a BEAUTIFUL setting



## INSPIRATIONAL LIVING

Inspired to create exceptional homes, Palma strives to create properties that owners can call home. Every last detail is carefully considered to provide an exceptional standard of living. Beautiful locations, exquisite design, sophisticated interiors, efficient space planning are just some of the elements that you will find within all of Palma's projects.

With its latest project Palma has created affordable residences without compromise on quality.

LIVE EXCEPTIONAL.



## IT'S ABOUT EXCEPTIONAL LIVING

Palma's stunning trail of exquisite property developments speak for itself. Its flagship projects include the iconic Infinity Cayan Tower in Dubai Marina, the distinguished Silverene Towers and the recently completed beachfront property, Serenia Residences on The Palm.

Palma takes on with its team of experts one project at a time to give each one the time and dedication required to produce an exceptional home.

Each Palma project has its own refined identity and character that reflects on its owners.

WELCOME HOME

# Welcome to OLIVARA

Where Exceptional Yet Affordable Living Is Made Possible

Nestled around Social District Park in Dubai Studio City, Olivara offers exceptional living by the award-winning developer, PALMA HOLDING.

The apartments are set among lush greenery, tree-lined walking lanes, seating corners and kids play areas. Social District Park covers an impressive 8000 sq ft, full of green open spaces and a magnificent boulevard that leads on to the community club house and retail avenue.

Infused with a modern glass look and a beautiful setting, Olivara will offer a delightful urban home close to nature.



# BESPOKE DEVELOPER MEETS DISTINGUISHED ARCHITECT - PART III

Palma Holding and Hazel Wong come together for the third time to create a signature development for the urban, modern life.

Hazel Wong is a renowned name in the world of design and architecture with her most notable project, Emirates Towers on Sheikh Zayed Rd. Together Palma Holding and Hazel Wong have created Silverene Towers, Dubai Marina, Serenia Residences, The Palm and The Jewels Towers, Dubai Marina.

Now comes their latest project, an urban residential community with a modern glass exterior that envelops a magnificent park and boulevard.



Palm Jebel Ali



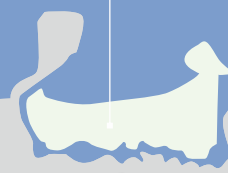
Jebel Ali Port



Palm Jumerah



Dubai Marina



Mall of the Emirates

Arabian Ranches

The World



Burj Khalifa



Dubai International Airport



Motor City



HESSA ST.

UMMSUQEIMS

SHEIKH MOHAMMED BIN ZAYED RD

EMIRATES RD.

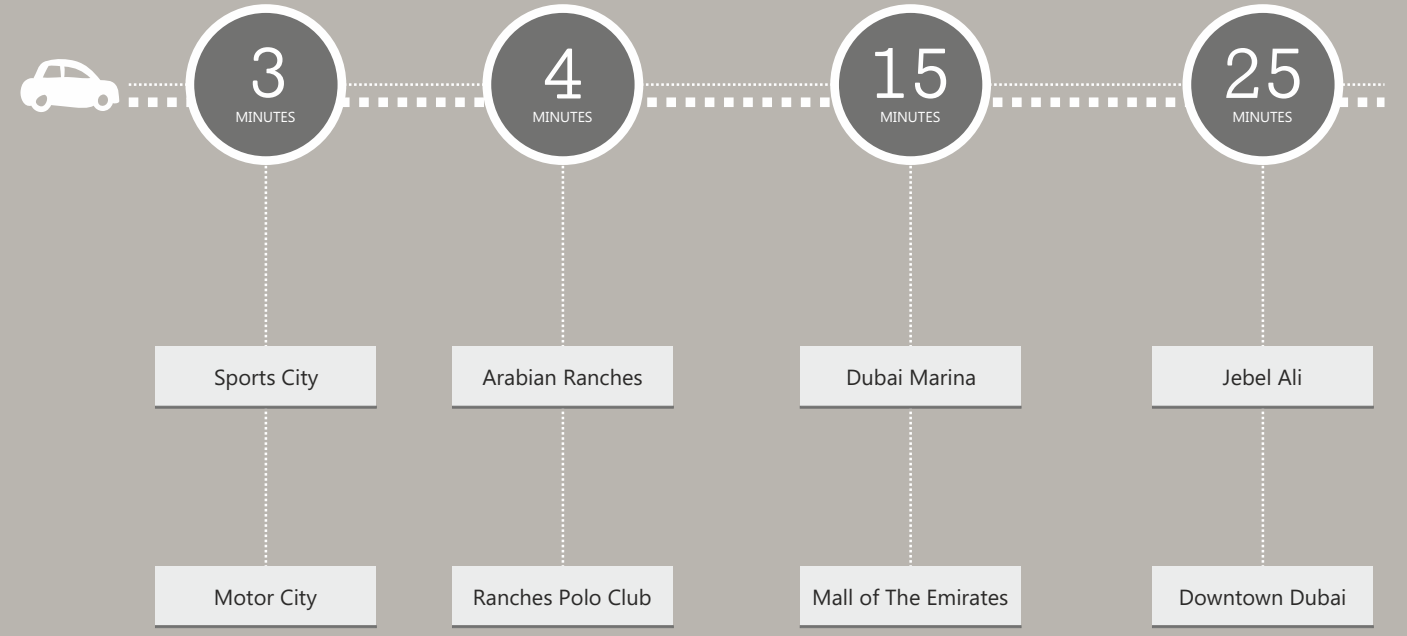


OLIVARA  
RESIDENCES & PARK





# NEIGHBORHOOD





OLIVARA is the ideal home for affordable urban family living, comprising artfully designed studios, 1, 2, 3 bedroom apartments that surround a green, spacious park and club house.



## A HOME DESIGNED FOR YOU

Step inside sunlit, open living spaces. Each apartment has been designed with stylish fully fitted kitchens, bathrooms and bedrooms creating quality bespoke homes only possible in a development by Palma Holding.



TRANQUIL  
INTERIORS





# OPEN SPACES OVERLOOKING SOCIAL DISTRICT PARK

Each home is aesthetically designed to optimize the views of the park through high ceilings and large, translucent windows.



## SOCIAL DISTRICT PARK

At the centre of Social District lies an expansive 8,000 sq.m. park boulevard, lined with trees, pedestrian pathways, cycling lanes, kids bicycle tracks, play areas and several shaded seating corners.

A tree-lined walking track leads to the Social District Club House and retail avenue.

WHY GO TO A  
PARK WHEN YOU  
CAN LIVE IN ONE!





# OLIVARA CLUBHOUSE

At your doorstep lies a large state-of-the-art gymnasium that overlooks a magnificent temperature-controlled swimming pool, kids play area and park facilities.



COOL WEEKENDS  
ON THE POOL



FRESH CAREFREE  
MORNINGS



## CAFES, RESTAURANTS, GROCERY AT YOUR DOORSTEP

A vibrant addition to the community includes a collection of shops, cafes, restaurants and a grocery store next to Olivara's club house.

Olivara truly boasts an irresistible blend of sophisticated urban living close to every day needs for shopping, entertainment and socializing.

# AMENITIES



KIDS PLAY AREA



KIDS CYCLING LANES



WALKWAYS &  
SEATING CORNERS



PARK



24 HOUR SECURITY



GUEST PARKING



SWIMMING POOL



MODERN GYMNASIUM



CAFES AND  
RESTAURANT



GROCERY STORE



# FLOOR PLANS

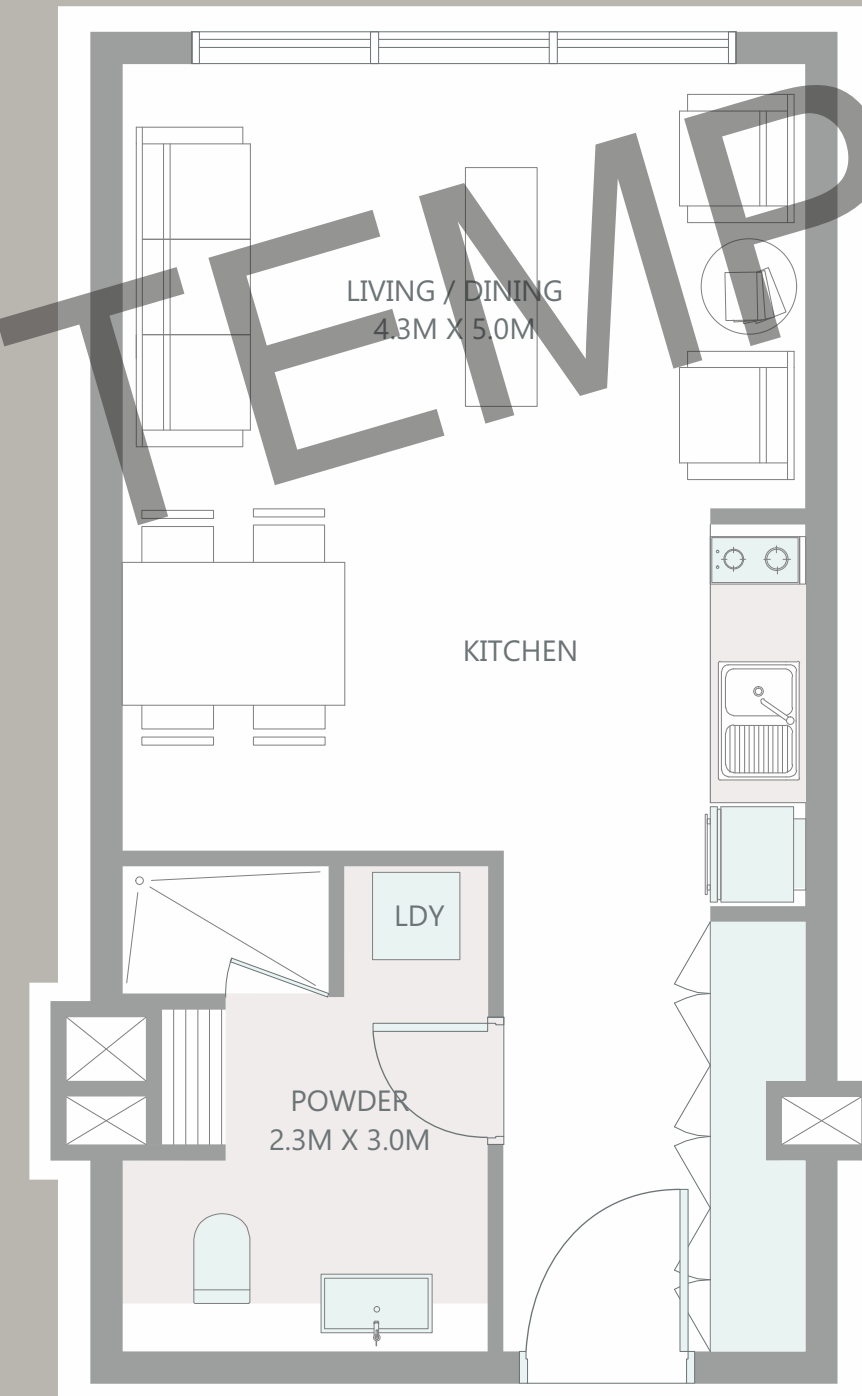
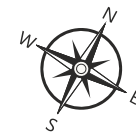
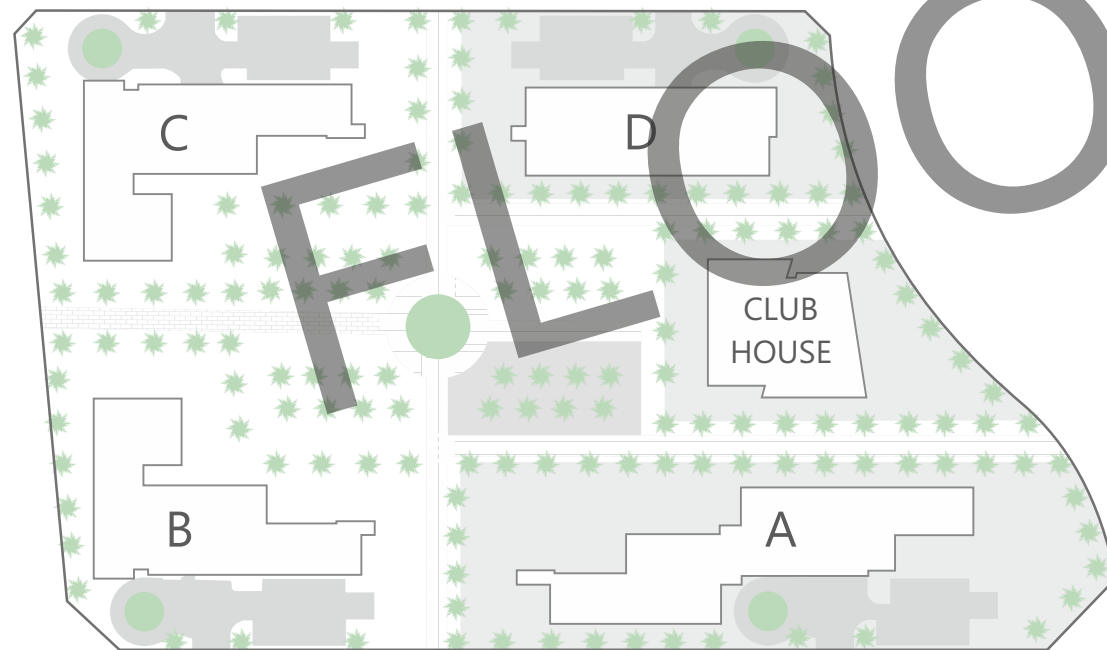
STUDIO	.....	1,128 sq. ft.
1 BEDROOM	.....	7,840 sq. ft.
2 BEDROOM (Type A)	.....	2,638 sq. ft.
2 BEDROOM (Type B)	.....	765 sq. ft.
2 BEDROOM + MAID (Type A)	.....	2,959 sq. ft.
2 BEDROOM + MAID (Type B)	.....	836 sq. ft.
2 BEDROOM + MAID (Type C)	.....	227 sq. ft.
3 BEDROOM + MAID	.....	605 sq. ft.

## RESIDENTIAL DEVELOPMENT UNIT PLANS

### STUDIO

Internal Area	405 sq. ft. (37.6 sq.m.)
Total Area	405 sq. ft. (37.6 sq.m.)

### KEYPLAN





OLIVARA  
RESIDENCES & PARK



**PALMA HOMES REAL ESTATE DEVELOPMENT L.L.C.**

Developer Reg No.: 1068 | Project No.: 1641

Escrow Bank and Account No. : Emirates NBD (0204855818104)

Level 1, Silverene Tower B, Dubai Marina, P.O. Box 33668, Dubai, UAE

T : +971 4 452 2202 | 800-PALMA (Toll Free) | E: info@palmaholding.com | W : www.palmaholding.com

